

for K80G, K110G & K120G TOPKICK KODIAK King Pin Repairs

The following assembly instructions are recommended for TOPKICK KODIAK front steering axle king pin repairs.

Identify parts from the diagram on the right before making the repair. Note the location and follow the instructions below.

UPPER SPINDLE BORE

This application uses a **cup and cone bearing (1)** in the upper bore. Remove the old cup and cone bearing from the spindle bore and replace it with a new cup and cone bearing found in the repair kit.

Spacer (2): If the spindle locks up after applying (406 lbs) of torque, additional shims will be needed. Add one or more .010 shim (found in the kit) with the spacer to free up the spindle.

SEALS BETWEEN SPINDLE and AXLE EYE

Top axle bore (3): Place the blue seal with the small end of the taper on top of the axle.

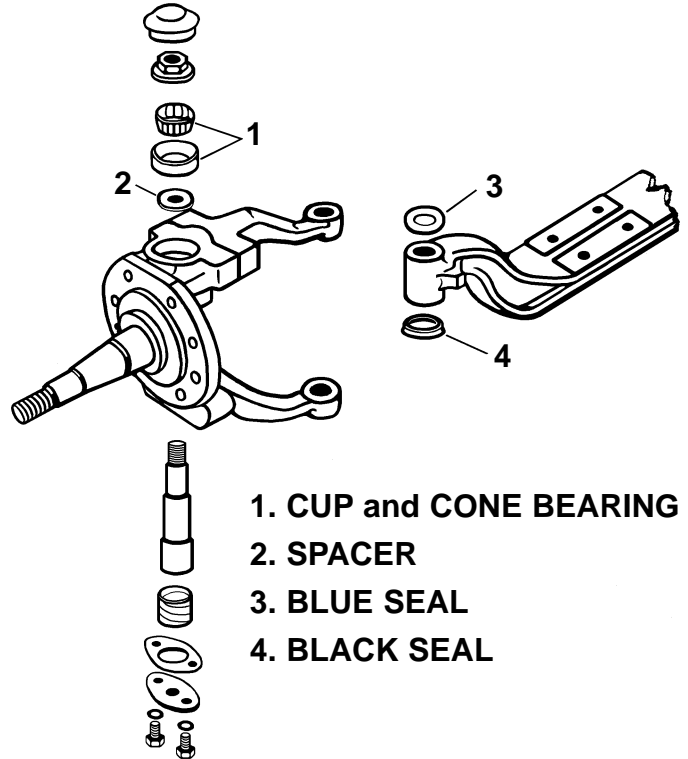
Bottom axle bore (4): Place the black seal with the small end of the taper up against the axle.

Note: Both seals must be placed so that the tapered or smaller end of the seal is against the axle with the larger end of each seal facing the spindle bores.

CALL FOR ASSISTANCE:

Business hours: 6:30 A.M. to 5:00 P.M. EST. After hours: Leave a message. Expect a reply the next working day or sooner.

CUSTOMER SERVICE: 888-854-6474 (888-8KingPin)



01 577 0040

for K80G, K110G & K120G TOPKICK KODIAK King Pin Repairs

The following assembly instructions are recommended for TOPKICK KODIAK front steering axle king pin repairs.

Identify parts from the diagram on the right before making the repair. Note the location and follow the instructions below.

UPPER SPINDLE BORE

This application uses a **cup and cone bearing (1)** in the upper bore. Remove the old cup and cone bearing from the spindle bore and replace it with a new cup and cone bearing found in the repair kit.

Spacer (2): If the spindle locks up after applying (406 lbs) of torque, additional shims will be needed. Add one or more .010 shim (found in the kit) with the spacer to free up the spindle.

SEALS BETWEEN SPINDLE and AXLE EYE

Top axle bore (3): Place the blue seal with the small end of the taper on top of the axle.

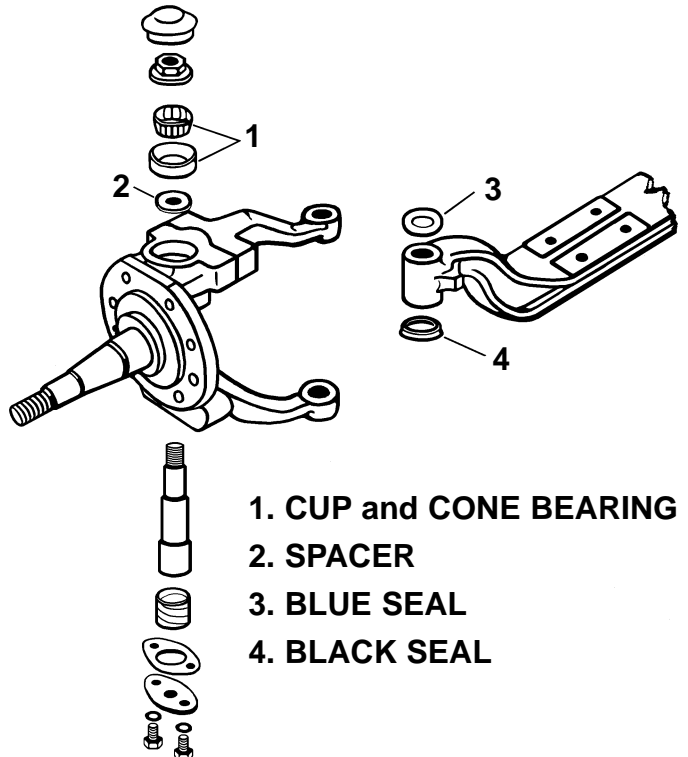
Bottom axle bore (4): Place the black seal with the small end of the taper up against the axle.

Note: Both seals must be placed so that the tapered or smaller end of the seal is against the axle with the larger end of each seal facing the spindle bores.

CALL FOR ASSISTANCE:

Business hours: 6:30 A.M. to 5:00 P.M. EST. After hours: Leave a message. Expect a reply the next working day or sooner.

CUSTOMER SERVICE: 888-854-6474 (888-8KingPin)



01 577 0040